

PHASE 1

(JUNE - AUGUST 2015)

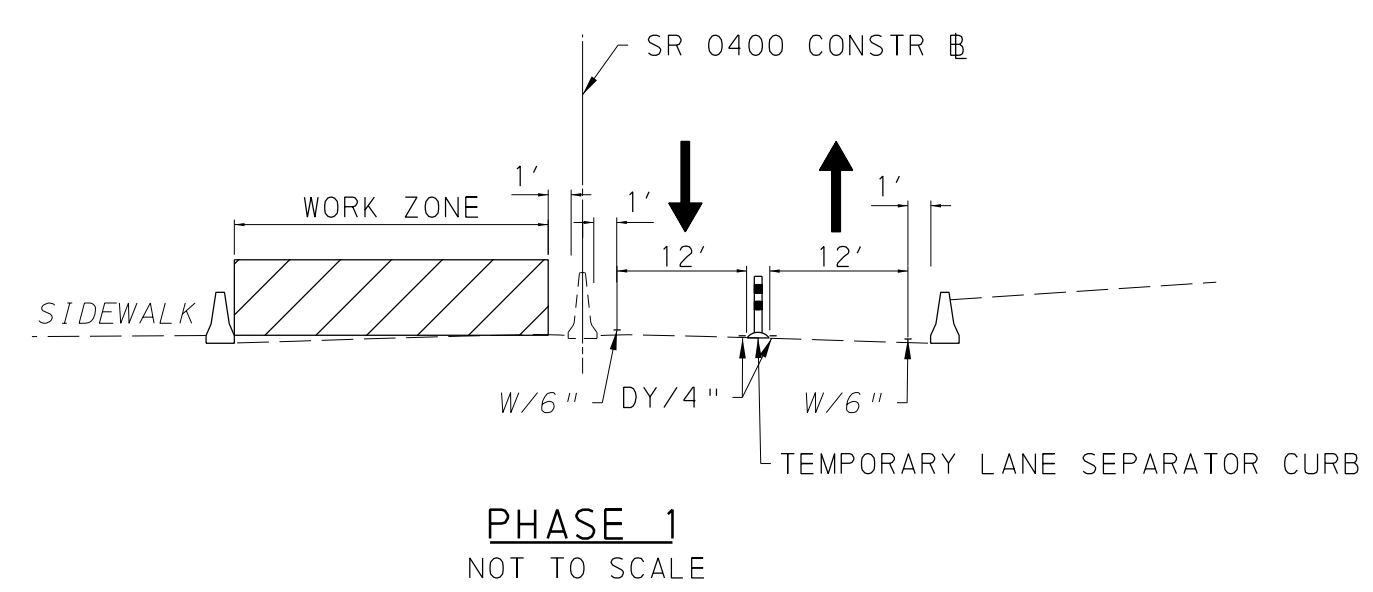
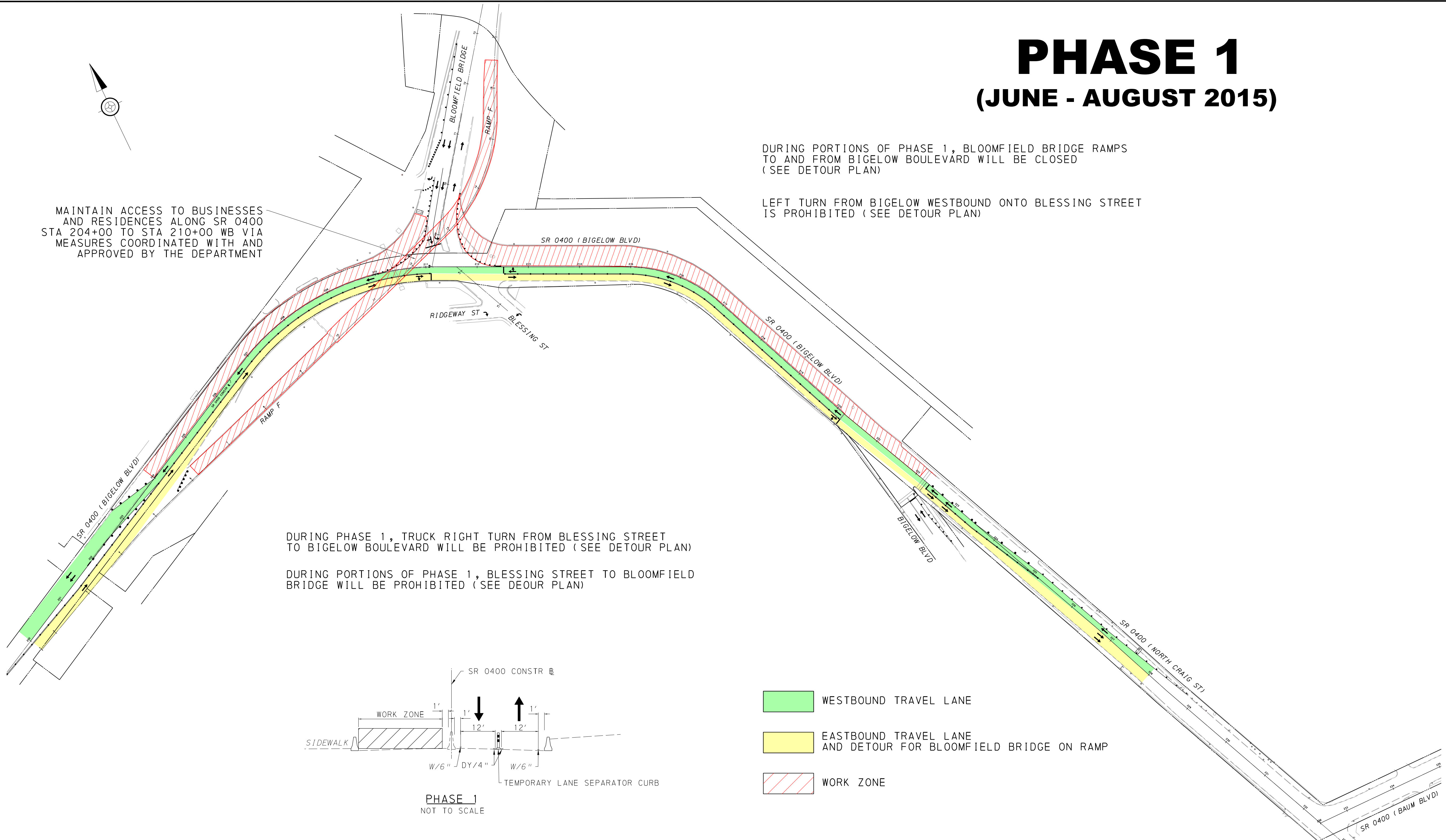
MAINTAIN ACCESS TO BUSINESSES AND RESIDENCES ALONG SR 0400 STA 204+00 TO STA 210+00 WB VIA MEASURES COORDINATED WITH AND APPROVED BY THE DEPARTMENT

DURING PORTIONS OF PHASE 1, BLOOMFIELD BRIDGE RAMPS TO AND FROM BIGELOW BOULEVARD WILL BE CLOSED (SEE DETOUR PLAN)

LEFT TURN FROM BIGELOW WESTBOUND ONTO BLESSING STREET IS PROHIBITED (SEE DETOUR PLAN)

DURING PHASE 1, TRUCK RIGHT TURN FROM BLESSING STREET TO BIGELOW BOULEVARD WILL BE PROHIBITED (SEE DETOUR PLAN)

DURING PORTIONS OF PHASE 1, BLESSING STREET TO BLOOMFIELD BRIDGE WILL BE PROHIBITED (SEE DETOUR PLAN)



- WESTBOUND TRAVEL LANE
- EASTBOUND TRAVEL LANE AND DETOUR FOR BLOOMFIELD BRIDGE ON RAMP
- WORK ZONE